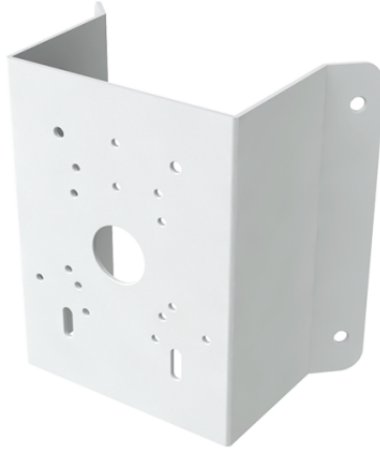




AMA-A

ADVANCE NEXT CORNER BACKPLATE



Corner-mounting accessory for Next and Advance cameras. For model compatibility please refer to the diagram in the download section.



AMA-A

ADVANCE NEXT CORNER BACKPLATE

GENERAL DATA

Height (mm)	215
Width (mm)	215
Depth (mm)	121.4
Product weight (g)	2050
Type of finishing materials	Steel
Product color	White
Operating temperature (°C)	-40 ÷ 60
Operating humidity (RH max) (%)	25 ÷ 90



AMA-A

ADVANCE NEXT CORNER BACKPLATE

ACCESSORIES



JBA-BA

ADVANCE NEXT BIG IP66 CONNECTION BOX

Junction box for securing Next and Advance cameras. For model compatibility please refer to the diagram in the download section.



WMA-TVA

ADVANCE NEXT WALL BACKPLATE

Wall-mounting bracket for Next and Advance cameras. For model compatibility please refer to the diagram in the download section.



WMA-KTBBA

ADVANCE NEXT WALL BACKPLATE

Wall-mounting bracket for Next and Advance cameras. For model compatibility please refer to the diagram in the download section.



JBA-TBBA

ADVANCE NEXT CONNECTION BOX IP66

Junction box for securing Next and Advance cameras. For model compatibility please refer to the diagram in the download section.



JBA-TVA

ADVANCE NEXT CONNECTION BOX IP66

Junction box for securing Next and Advance cameras. For model compatibility please refer to the diagram in the download section.



WMA-FA

ADVANCE NEXT WALL BACKPLATE

Wall-mounting bracket for Next and Advance cameras. For model compatibility please refer to the diagram in the download section.



AMA-A

ADVANCE NEXT CORNER BACKPLATE

ACCESSORIES



**WMA-
BA**

ADVANCE NEXT BIG WALL BACKPLATE

Wall-mounting bracket for Next and Advance cameras. For model compatibility please refer to the diagram in the download section.



**JBA-
KA**

ADVANCE NEXT CONNECTION BOX IP66

Junction box for securing Next and Advance cameras. For model compatibility please refer to the diagram in the download section.



**JBA-
FA**

ADVANCE NEXT CONNECTION BOX IP66

Junction box for securing Next and Advance cameras. For model compatibility please refer to the diagram in the download section.