

Specification for Dimmable LED Driver KL40C-PDV1 C.C.



- Flicker-free for whole dimming range
- Stand-by power below 0.5W
- Primary dimming with push button
- Secondary dimming with 1-10V dimmer and potentiometer
- Built-in DALI interface
- Supports 10V PWM dimming (3KHz-8KHz)
- Protection: short circuit / over temperature/ over voltage
- Derating current for over high ambient temperature
- Push dim with memory function
- 5 year warranty

1. Parameters

Input	Operating Voltage	198-264V AC 50Hz /60Hz
	Rated Input Voltage	220-240V AC 50Hz /60Hz
	DC Input Voltage range	200-240V DC
	Input Current	0.25A MAX
	Input Inrush Current	15A (Half current pulse width 100US)
	Power Factor	≥0.90 @230V AC (Full load)
	No-load power	≤1W
	Stand-by Power	≤0.5W
	Efficiency	87%Max. @230VAC (Full load) (7000mA)
	Wiring Method	Push terminal, wire cross section:0.75-1.5mm ²
Output	Operating mode	Constant Current
	Load type	LED
	Ripple requirement (Flickering or flickering-Free)	Flicker value: less than 2% for whole dimming range
	No-load output voltage	75V DC Max
	Load output voltage range	6-58V DC
	Full load output power	40W Max
	Load output current	700MA (6-58V) 800MA (6-50V) 900MA (6-45V) 950MA (6-42V) 1050MA (6-38V) 1200MA (6-33V)

Shenzhen Merrytek Technology Co., Ltd

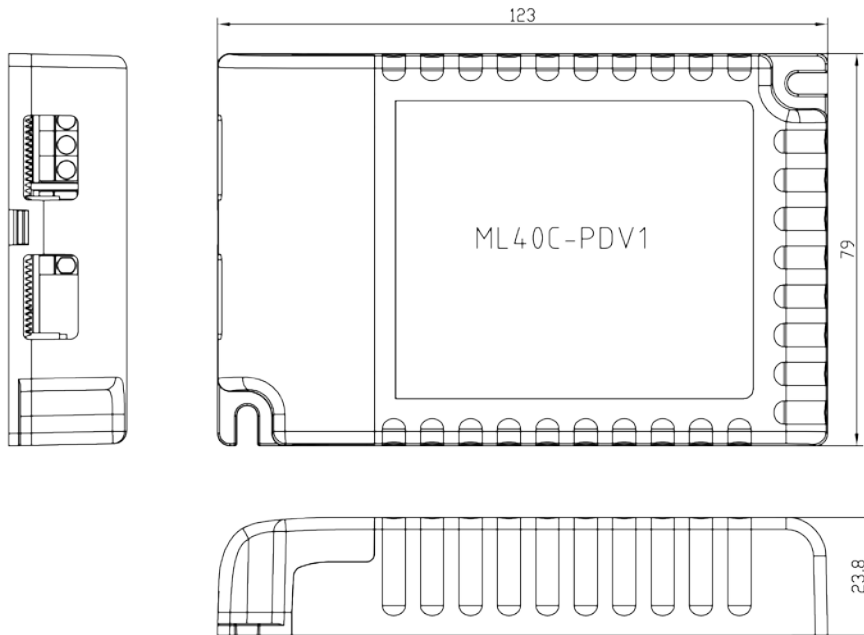
No. 3 Building, 380 Xiangshan Avenue, No. 3 Industry Park Luotian, Songgang, Bao'an, Shenzhen, Guangdong, China,
Tel: +86 (0)755-2305 7253 Fax: +86 (0)755-2786 3012 Web: www.merrytek.com

	Constant current/voltage Precision	Constant Current Precision $\pm 5\%$
	Start up time	<0.5S
	Wiring method	Push terminal, wire cross section:0.75-1.5mm ²
Control Method	Primary PUSH Dimming	Primary PUSH dimming (Max.wire length: 20M)
	1-10V (0-10V) Dimming	1-10V dimming (Port current<1MA) no turn off function (Max.wire length: 20M)
	Dimming Range	Primary PUSH & DALI dimming: 0%-100% 1-10V dimming: 2%-100%
	Primary PWM Dimming	1-10V port PWM dimming (3KHZ-8KHZ)
	Potentiometer	Yes, 100k Ω
	DALI Dimming	DALI dimming (Max.wire length: 300M)
Exception Protection Requirements	Input over voltage protection	300V AC 50Hz/60Hz 2 Hours
	Output over voltage protection	N/A
	Output over load protection	Yes
	Output no load protection	No, (Can be inquired)
	Output over temperature protection	Yes, without self recovery function, over temperature protection central value: 85 $^{\circ}$ C (Can be inquired)
	Output short circuit protection	Yes, without self recovery function (Can be inquired)
Operating Environment	Operating temperature/ humidity	-25 $^{\circ}$ C~50 $^{\circ}$ C Humidity:85% (Non-condensing)
	Storage temperature/ humidity	-40 $^{\circ}$ C...+80 $^{\circ}$ C
	Max. case temp (Tc)	85 $^{\circ}$ C
Safety & EMC	Withstand voltage	3750V AC 5mA 60S (Input "L N"- Output "SEC+ SEC- 1-10V")
	EMC standard	EN55015 EN61547 EN61000-3-2 EN61000-3-3
	DALI protocol standard	IEC62386-102IEC62386-207
	Safety standard	EN61347-1 EN61347-2-13
	Certification	CE0700 RoHS
Others	Degrees of protection	IP20
	Type of protection	Class II
	Installation type	Independent installation
	Installation dimension	123*79*24MM
	Blackout memory function	Yes, PUSH memory
	PUSH Dimming synchronization	15
	Packaging requirement	white box+ Instructions +Clapboard +Outer Carton (K=A)
	Life	50000h @Ta full load

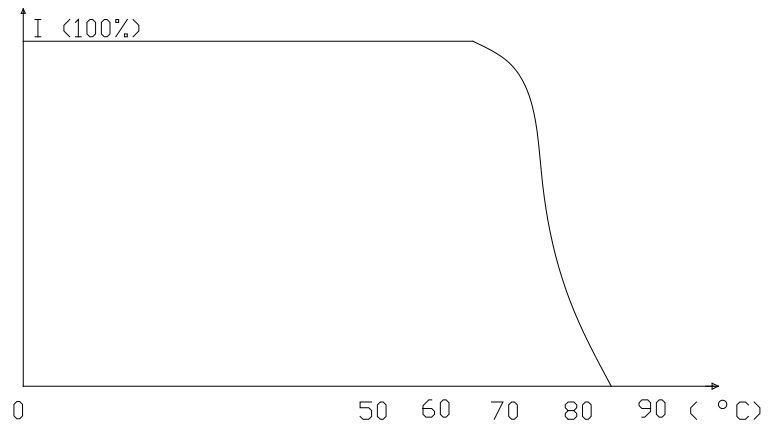
Shenzhen Merrytek Technology Co., Ltd

 No. 3 Building, 380 Xiangshan Avenue, No. 3 Industry Park Luotian, Songgang, Bao'an, Shenzhen, Guangdong, China,
 Tel: +86 (0)755-2305 7253 Fax: +86 (0)755-2786 3012 Web: www.merrytek.com

2. Dimension (Unit: mm)



3. Derating



4. Wiring Diagram

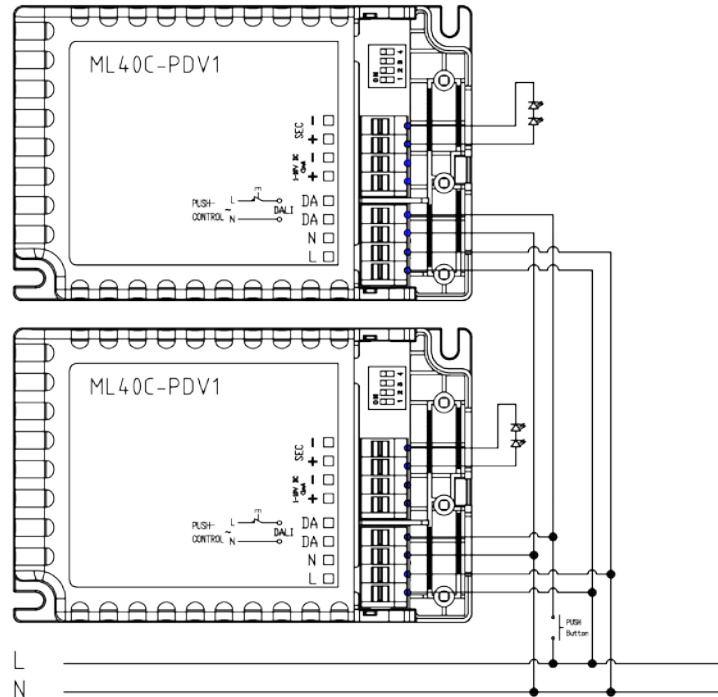


Fig. A Push Dimming (High voltage)

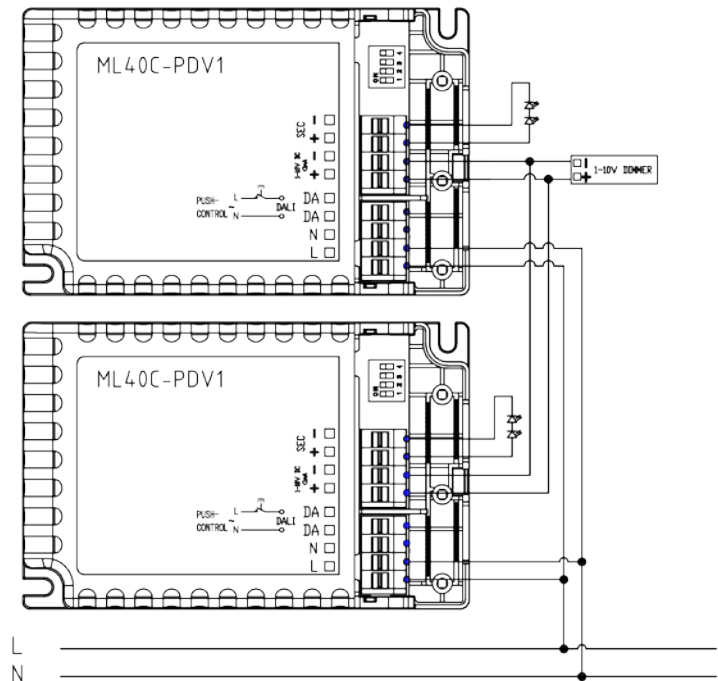


Fig. B 1-10V Dimming

Shenzhen Merrytek Technology Co., Ltd

No. 3 Building, 380 Xiangshan Avenue, No. 3 Industry Park Luotian, Songgang, Bao'an, Shenzhen, Guangdong, China,
 Tel: +86 (0)755-2305 7253 Fax: +86 (0)755-2786 3012 Web: www.merrytek.com

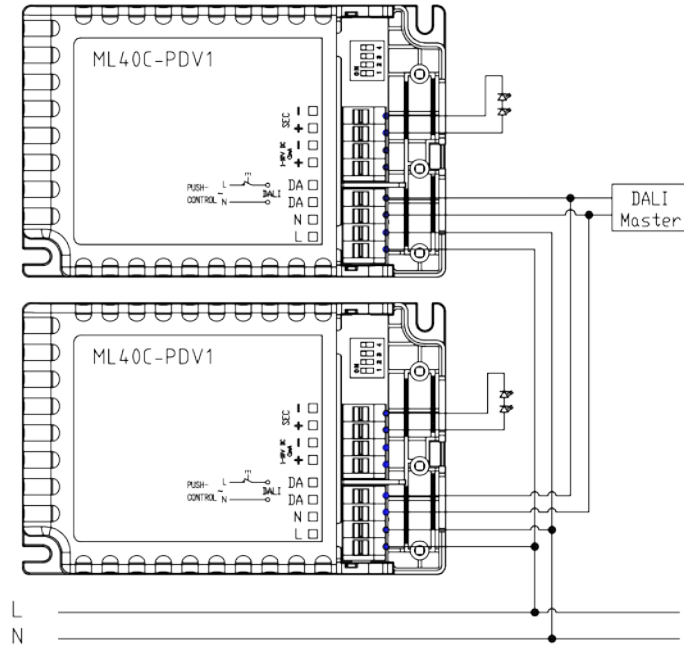


Fig.C DALI Dimming