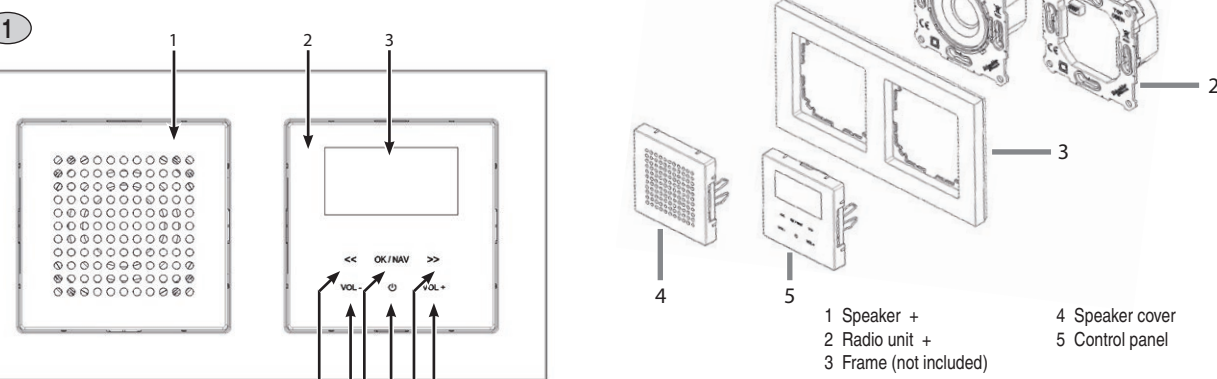


LOGIQ family



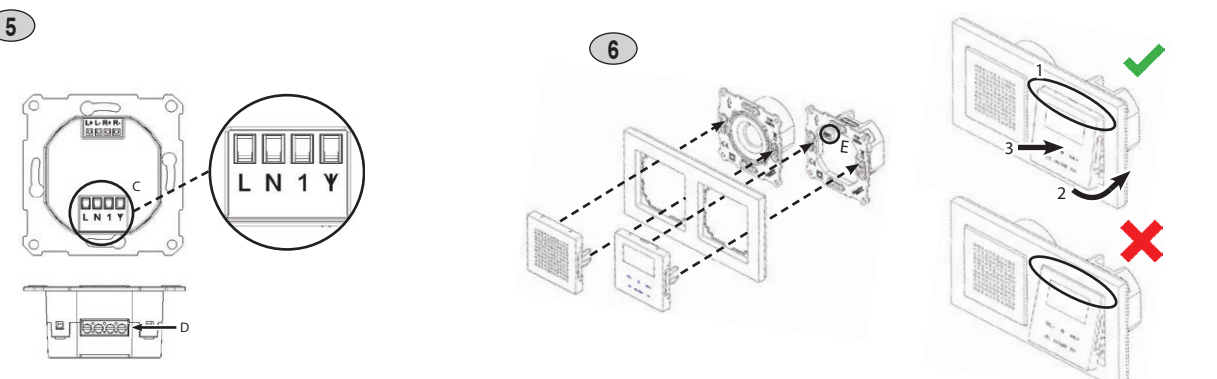
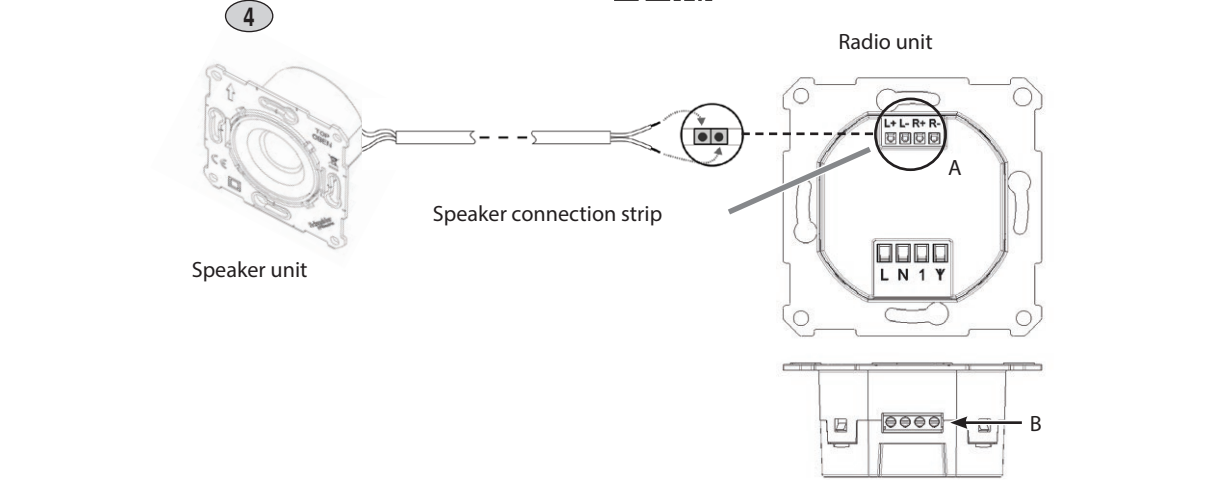
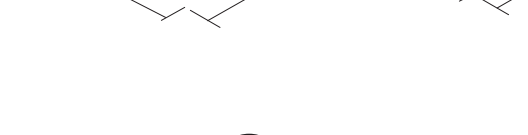
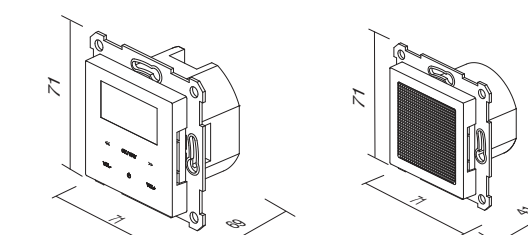
SLO

- 5 Pregled naprave:**
- Zvočnik
 - Natzojna plošča
 - Zaslón
 - <<
 - Seznam postaj/iskanje postaj/navigacija po meniju/naslednja sklada
 - Znanje glasnosti
 - OKNAV**
Kratek pritisk = potrđite izbire
Dolji pritisk = Dostop do menija in izbira vira
 - Vklpovanje pripravlenosti**
 - >>
 - Seznam postaj/iskanje postaj/navigacija po meniju/naslednja sklada
 - VOL+**
Zvišanje glasnosti
- 6 Pregled sestavnih delov**
- Zvočnik +
 - Radjska enota +
 - Okvir (ni priložen)
 - Pokrov zvočnika
 - Natzojna plošča

- 3 Varnostna navodila**
- 3.1 Uporabljeni znaki in simboli**
- V priročniku za hitri začetek.
- Opazuje varnostno navodilo, ki lahko ob neupoštevanju povzroči hude poškodbe ali smrt.
 - Opazuje naslednje opozilne besede:
 - NEVARNOST** - resna nevarnost smrtnih poškodb
 - OPOROILNO** - resne poškodbe, lahko tudi smrtne

TEM

www.tem.si
 TEM Catez d.o.o.
 Čureb 1, 113
 SI-8212 Volška Loka
 T+386 (0)7 348 99 00
 tem@tem.si



- 5 Servisna navodila**
- Zvočnik
 - Natzojna plošča
 - Zaslón
 - <<
 - Seznam postaj/iskanje postaj/navigacija po meniju/naslednja sklada
 - Znanje glasnosti
 - OKNAV**
Kratek pritisk = potrđite izbire
Dolji pritisk = Dostop do menija in izbira vira
 - Vklpovanje pripravlenosti**
 - >>
 - Seznam postaj/iskanje postaj/navigacija po meniju/naslednja sklada
 - VOL+**
Zvišanje glasnosti

	EQ01	EQ02
1x radio + upravljalna enota	x	x
1x zvočnik + pokrov zvočnika	x	x
1x priročnik za hitri začetek	x	x
1x antena	x	x

- 6.2 Posebne funkcije radia DIGITRADIO UP 55**
- Radio DIGITRADIO UP 55 sestavlja sprejemnik DAB+/FM/Bluetooth z naslednjimi funkcijami:
- Shranite lahko do 20 priljubljenih postaj DAB+ in 20 priljubljenih postaj FM.
 - Radio sprejema frekvence FM 87,5 - 108 MHz (analogno) in DAB+ 174,9 - 239,2 MHz (digitalno).
 - Naprava ima zaslon s prikazom časa in datuma.
 - 2 alarma
 - Funkcija za izklop v spanju
 - Predvajanje glasbe prek povezave Bluetooth

- 7 Osnovno delovanje**
- 7.1 Vklp in izklop radia na kratko pritisnete polje na dotik za vklop/stanje pripravlenosti (7).**
- Za dostop do glavnega menija na kratko pritisnete polje na dotik **OKNAV** (6). V glavnem meniju lahko nato s pritiskom na << krmilite po glavnem meniju. Nastavitve lahko izberete in shranite tako, da na kratko pritisnete **OKNAV**. Če želite zapustiti glavni meni, pritisnete polje na dotik **OKNAV** ali počakate približno 30 sekund, da se menij samodejno zapre.
- Če želite spremeniti vr predvajanja, najprej odprite glavni meni. S puščicama << ali >> izberite Vir (Source) in se dotaknete polja **OKNAV**. Nato lahko s << ali >> izberete vir predvajanja in vklopite predvajanje z dotikom polja **OKNAV**.
- Glasnost nastavite s **VOL+** in **VOL-**.

- 8.1 Priključenje zvočnika**
- **Ročni kabel zvočnika (+)** povežite s priključkom za zvočnik, označenim z L+ ali R+ (A) na radjski enoti, in ga z ustrezno ploščasto izvijačko (B) privijete.
- **Nato povežite črni kabel zvočnika (-)** s priključkom za zvočnik, označenim z L- ali R- (A) na radjski enoti, in ga z ustrezno ploščasto izvijačko (B) privijete.
- Za povezavo uporabljajte samo kable s koničnimi uvočnicami ali togo žico.
- Predvajanje zvok je vedno močno, tudi pri uporabi dveh zvočnikov (dva zvočnika ni priložen, na voljo je ustrezno izolacijsko cev).
- Kabel zvočnikov in napačni kabl morajo biti podvojni ščitilni ločen drug od drugega na ustrezen način (s pritrditvijo s kabelsko sponko ali v napajalnem izolacijskem cevi).
- Kabelov za zvočnike in napačni kablom vodni in dovoljeno namestiti skupaj zunaj podometne skatle.

- 3.3 Ciljna skupina za opevne za uporabo**
- Uređaje in naprave, ki jih je treba ločiti (npr. ločeno napajanje po praznih kanalih).
- 3.4 Sigurno korišćenje sistema DIGITRADIO UP 55**
- 3.1 Sigurno korišćenje sistema DIGITRADIO UP 55**
- Uzimate v obzir sledjece informacije kako biste umanjali sigurnosne rizike, sprjeliči oštećenja uređaja i doprinijeli zaštiti okoliša.
- 3.2 Namjena**
- Molimo graditelje ovaj vodič za brzi početak rada. Jedino na taj način možete sigurno povezati i pravilno upravljati uređaj. Također uzмите u obzir dodatne korake rada u cjelovitim uputama za uporabu koje možete pronaći na mjestu preuzimanja svog proizvoda na početnoj stranici. Vodič za brz početak rada i upute za uporabu čuvajte na sigurnome mjestu za buduću uporabu. Uređaj je namijenjen prijmu radjskog programa DAB+/FM. Nadalje, omogućuje prijmu i reprodukciju glasbe putem Bluetootha ako je povezan drug uređaj. Uređaj je namijenjen isključivo za zvučnike (i nekomerijalni) ili isključivo za zvučnik. Svaka druga upotreba - nije namjena.

HR

- 1 Pregled uređaja:**
- Zvočnik
 - Upravljačka ploča
 - Zaslón
 - <<
 - Popis stanica / Skeniranje stanice / Navigacija izbornikom / Prethodni zvučni zapis
 - VOL-**
Smanji glasnoću
 - OKNAV**
Kratko pritisni tipku = potvrdi odabir
Dolji pritisni tipku = pristup izborniku i odaberi izvor
 - Uključeno / u stanju čekanja**
 - >>
 - Popis stanica / Skeniranje stanice / Navigacija izbornikom / Sljedeća pjesma
 - VOL+**
Povećaj glasnoću

- 6.2 Posebne funkcije radia DIGITRADIO UP 55**
- Sustav DIGITRADIO UP 55 sastoji se od DAB+/FM/Bluetooth prijamnika sa sljedećim funkcijama:
- Shranite pohraniti do 20 omiljenih DAB+ i FM stanica.
 - Raspon FM (analogne) frekvencije radia iznosi 87, - 108 MHz, a DAB+ (digitalne) frekvencije 174,9 - 239,2 MHz.
 - Uređaj prikazuje vrijeme i datum.
 - 2 alarma
 - Funkcija za automatsko isključivanje
 - Uređaje glasbe putem Bluetootha

- 3 Sigurnosne upute**
- 3.1 Korišteni znaki i simboli**
- U vodiču za brz početak rada, označava sigurnosne upute čije nepridržavanje može dovesti do ozbiljnih ozljeđaja ili smrti.
- Uređaje glasbe putem Bluetootha
- OPASNOST** - ozbiljan rizik od smrtonosnih ozljeđaja
- UPOZORENJE** - teška ozljeđaja, moguće smrtionosa
- OPREZ** - ozljeđaja
- U vodiču za brz početak rada, označava sigurnosne upute čije nepridržavanje može dovesti do ozbiljnih ozljeđaja ili smrti.

- 8.1 Spojite crveni kabel zvočnika (+)** na priključak zvočnika s oznakom L+ ili R+ (A) na radjskoj jedinici i zategnite ga pomoću odgovarajućeg odvijača s ploščastim završetkom (B).
- 8.2 Povežite crni kabel zvočnika (-)** na priključak zvočnika s oznakom L- ili R- (A) na radjskoj jedinici i zategnite ga pomoću prikladnog odvijača s ploščastim završetkom (B).
- 8.3 Završna montaža**
- Obje jedinice (zvočnik i radjska jedinica) zatim se umetnu u postolje ugrađene utičnice i pričvršćuju se u postolje odgovarajućim sredstvom za pričvršćivanje (nije uključeno).
- 9 Tehnički podaci**
- Napajanje: 230 V ~ / 50 Hz
 Potrošnja energije tijekom normalnog rada: max. 6 W
 Potrošnja energije u stanju čekanja: < 0,5 W
 Razred zaštite: IP20
 Frekvencija prijama: DAB/DAB+ 174.928 - 239.200 MHz FM: 87,5 - 108 MHz
 Bluetooth: Verzija V4.1, 2.402 - 2.480 GHz razred 2, maksimalno +4 dbm
 Glasbeni izlaz: 2 x 2 W RMS
 Uložak: 2 baterije tipa AA (nije uključeno) i radjskoj jedinici, osjetljivi ili mentalni sposobnosti ili s nedovoljnim iskustvom i/ili znanjem, osim ako ih nadzire osoba odgovorna za njihovu sigurnost ili ako su ih oni uputili kako koristiti uređaj.

EN

- 1 Device overview:**
- Zvočnik
 - Control panel
 - Display
 - <<
 - Station List/Station Scan/Menu Navigation/Previous Track
 - VOL-**
Reduce volume
 - OKNAV**
Press briefly = Confirm selection
Hold down = Access menu and source selection
 - OnStandby**
 - >>
 - Station List/Station Scan/Menu Navigation/Next Track
 - VOL+**
Increase volume

- 6.2 Special features of the DIGITRADIO UP 55**
- The DIGITRADIO UP 55 is comprised of a DAB+/FM/Bluetooth receiver with the following functions:
- You can store up to 20 DAB+ and 20 FM favourite stations.
 - The radio receives on the FM 87.5 - 108 MHz (analogue) frequencies and DAB+ 174.9 - 239.2 MHz (digital).
 - The device has a time and date display.
 - 2 alarms
 - Sleep timer function
 - Music playback via Bluetooth

- 3 Safety instructions**
- 3.1 Signs and symbols used**
- In the Quick Start Guide, indicates a safety instruction which can lead to serious injuries or death if not observed.
- Note the following signal words:
- DANGER** - Serious risk of fatal injury
- WARNING** - Serious injury, possibly fatal
- CAUTION** - Injuries
- The following information that must always be observed to prevent defects, data loss/misuse and undesired operation. It also describes other useful functions and instructions for using and operating your device.
- Beware of electrical voltage.** Follow all safety instructions to avoid electric shock. Do not open the device under any circumstances.
- For further operations, settings and functions,** please refer to the full instruction manual, which you can find in the download area for your product on the homepage.

- 8.1 Connecting the speaker unit**
- Connect the red speaker cable (+) to the speaker connection marked L+ or R+ (A) on the radio unit and tighten using a suitable flat-bladed screwdriver (B).
- Connect the black speaker cable (-) to the speaker connection marked L- or R- (A) on the radio unit and tighten using a suitable flat-bladed screwdriver (B).
- Use only connection cables with wire end sleeves or rigid wire.
- Playback is always in mono, even in 2 speaker mode (2 speaker not included in the scope of delivery; can be obtained from specialist dealers as an accessory).
- Use only connection cables with wire end sleeves or rigid wire.
- Do not touch the connection cables with your fingers. This could lead to short-circuits, and lead to an electrical shock.
- This device is not intended to be used by people (including children) with limited physical, sensory or mental capacities or lack of experience and/or knowledge, unless they are supervised by the person responsible for their safety or they have been instructed by them as to how to use the device.

- 5 Service instructions**
- This product is quality-tested and provided with the legally-specified warranty period of 24 months from the date of purchase. Please keep your receipt as proof of purchase. In the event of warranty claims, please contact the product dealer.
- If you experience a problem with this unit, or for queries and information, our Technical Hotline is available: Mon-Fri 8:00 am - 6:00 pm on +49 (0) 3925 9220 1800.
- Repairs can also be ordered directly online at www.technisat.com.
- If the device needs to be returned, please use the following address only:
- TechniSat Digital GmbH
 Service-Center
 Nordstr. 4a
 39416 Sassenfurt, Germany

- 6 Description of the DIGITRADIO UP 55**
- 6.1 Scope of delivery**
- | | EQ01 | EQ02 |
|-----------------------------|------|------|
| 1 x radio + operating unit | x | x |
| 1 x speaker + speaker cover | x | x |
| 1 x Quick Start Guide | x | x |
| 1 x antenna | x | x |

- 6.2 Special features of the DIGITRADIO UP 55**
- The DIGITRADIO UP 55 is comprised of a DAB+/FM/Bluetooth receiver with the following functions:
- You can store up to 20 DAB+ and 20 FM favourite stations.
 - The radio receives on the FM 87.5 - 108 MHz (analogue) frequencies and DAB+ 174.9 - 239.2 MHz (digital).
 - The device has a time and date display.
 - 2 alarms
 - Sleep timer function
 - Music playback via Bluetooth

- 3 Safety instructions**
- 3.1 Signs and symbols used**
- In the Quick Start Guide, indicates a safety instruction which can lead to serious injuries or death if not observed.
- Note the following signal words:
- DANGER** - Serious risk of fatal injury
- WARNING** - Serious injury, possibly fatal
- CAUTION** - Injuries
- The following information that must always be observed to prevent defects, data loss/misuse and undesired operation. It also describes other useful functions and instructions for using and operating your device.
- Beware of electrical voltage.** Follow all safety instructions to avoid electric shock. Do not open the device under any circumstances.
- For further operations, settings and functions,** please refer to the full instruction manual, which you can find in the download area for your product on the homepage.

- 8.1 Connecting the speaker unit**
- Connect the red speaker cable (+) to the speaker connection marked L+ or R+ (A) on the radio unit and tighten using a suitable flat-bladed screwdriver (B).
- Connect the black speaker cable (-) to the speaker connection marked L- or R- (A) on the radio unit and tighten using a suitable flat-bladed screwdriver (B).
- Use only connection cables with wire end sleeves or rigid wire.
- Playback is always in mono, even in 2 speaker mode (2 speaker not included in the scope of delivery; can be obtained from specialist dealers as an accessory).
- Use only connection cables with wire end sleeves or rigid wire.
- Do not touch the connection cables with your fingers. This could lead to short-circuits, and lead to an electrical shock.
- This device is not intended to be used by people (including children) with limited physical, sensory or mental capacities or lack of experience and/or knowledge, unless they are supervised by the person responsible for their safety or they have been instructed by them as to how to use the device.

- 3.3 Target group for this instruction manual**
- The Quick Start Guide is intended for anyone installing, operating, cleaning or disposing of the device.
- 3.4 Using the DIGITRADIO UP 55 safely**
- Please take note of the following information to minimise safety risks, to prevent damage to the device, and to ensure a condition of environmental protection. Please read all of the safety information carefully and keep it for future reference. Always follow all warnings and instructions in this Quick Start Guide and on the back of the device.
- WARNING!**
- The device should only be operated under the intended environmental conditions.
- Do not expose the device to dripping or splashing water. If water has penetrated the device, disconnect it from the mains and inform the Service Department.
- Do not expose the device to heat sources which create extra heat and add to the temperature of the device in regular operation.
- Touching the device near to or in bath tubs, showers, swimming pools, running/dripping or splashing water. There is a risk of electrical shock and of damaging the device.
- This device is not intended to be used by people (including children) with limited physical, sensory or mental capacities or lack of experience and/or knowledge, unless they are supervised by the person responsible for their safety or they have been instructed by them as to how to use the device.
- Foreign bodies, e.g. nails, coins, etc., may not be inserted or fall into the device. Do not touch the connection contacts with metal objects or your fingers. This could lead to short-circuits, and lead to an electrical shock.
- Do not operate the device near to or in bath tubs, showers, swimming pools, running/dripping or splashing water. There is a risk of electrical shock and of damaging the device.
- This device is not intended to be used by people (including children) with limited physical, sensory or mental capacities or lack of experience and/or knowledge, unless they are supervised by the person responsible for their safety or they have been instructed by them as to how to use the device.
- Never allow children to use the device unsupervised.
- Modifications to the device are prohibited.

- 3.3 Target group for this instruction manual**
- The Quick Start Guide is intended for anyone installing, operating, cleaning or disposing of the device.
- 3.4 Using the DIGITRADIO UP 55 safely**
- Please take note of the following information to minimise safety risks, to prevent damage to the device, and to ensure a condition of environmental protection. Please read all of the safety information carefully and keep it for future reference. Always follow all warnings and instructions in this Quick Start Guide and on the back of the device.
- WARNING!**
- The device should only be operated under the intended environmental conditions.
- Do not expose the device to dripping or splashing water. If water has penetrated the device, disconnect it from the mains and inform the Service Department.
- Do not expose the device to heat sources which create extra heat and add to the temperature of the device in regular operation.
- Touching the device near to or in bath tubs, showers, swimming pools, running/dripping or splashing water. There is a risk of electrical shock and of damaging the device.
- This device is not intended to be used by people (including children) with limited physical, sensory or mental capacities or lack of experience and/or knowledge, unless they are supervised by the person responsible for their safety or they have been instructed by them as to how to use the device.
- Foreign bodies, e.g. nails, coins, etc., may not be inserted or fall into the device. Do not touch the connection contacts with metal objects or your fingers. This could lead to short-circuits, and lead to an electrical shock.
- Do not operate the device near to or in bath tubs, showers, swimming pools, running/dripping or splashing water. There is a risk of electrical shock and of damaging the device.
- This device is not intended to be used by people (including children) with limited physical, sensory or mental capacities or lack of experience and/or knowledge, unless they are supervised by the person responsible for their safety or they have been instructed by them as to how to use the device.
- Never allow children to use the device unsupervised.
- Modifications to the device are prohibited.

