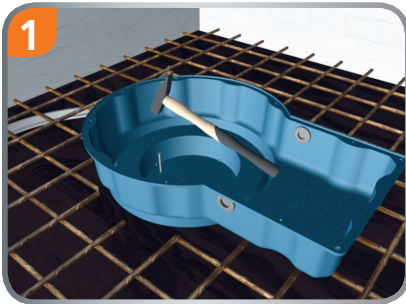
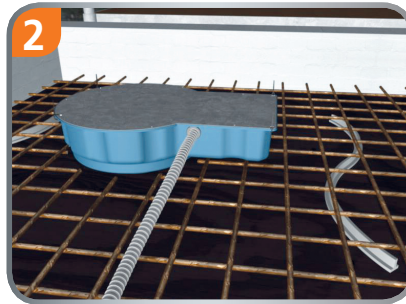


XXL Flexgroßdose Leuchten- und Einbaugehäuse

Montage im Ortbeton



1
XXL Flexgroßdose mit Nägel auf der Schalung befestigen.

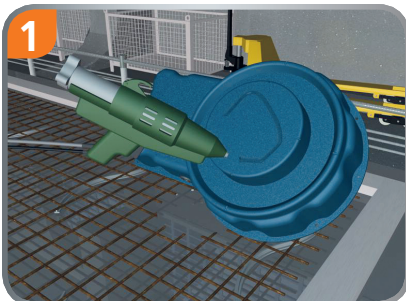


2
Deckel mit mitgelieferten Kabelbindern befestigen und Rohre einführen.

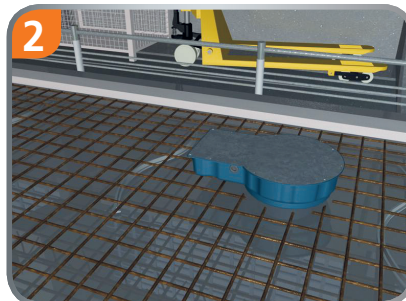


3
Stahlarmierung wird eingelegt und der Beton gegossen.

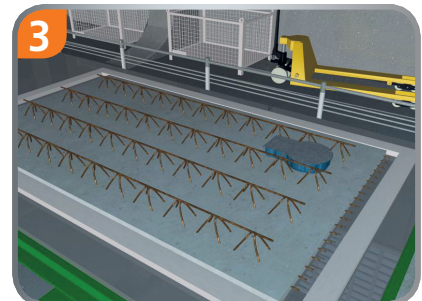
Montage im Fertigbetonteilwerk



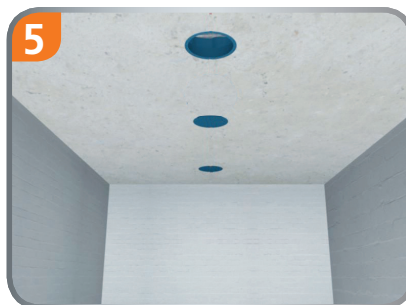
1
XXL Flexgroßdose mit Heißkleber auf den Schaltisch kleben.



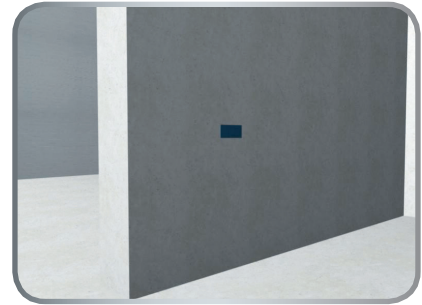
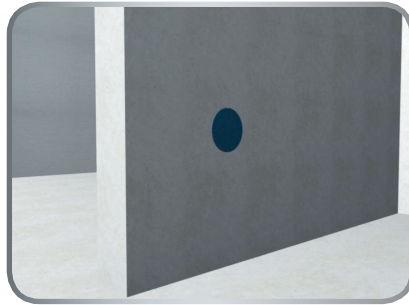
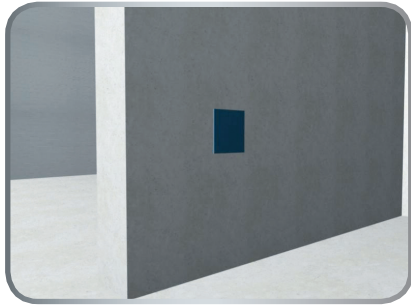
2
Stahlarmierung wird eingebracht.



3
Betonfertigteil wird gegossen.



Individuelle Aussparungen können angefertigt werden



Montageanleitung

Geben Sie uns die Maße der Leuchte und wir fertigen innerhalb von 5 Tagen jede Größe für Sie an

- Keine Mehrkosten
- Auch bei 1 Stück
- Passgenauer Ausschnitt

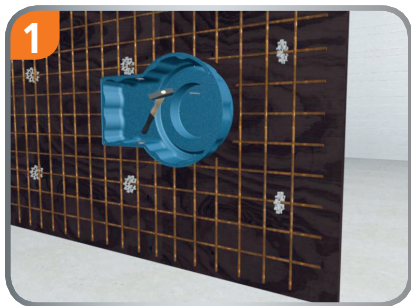
(Weitere, individuelle Deckenausschnitte z. B. rund oder rechteckig kurzfristig lieferbar)

Beispielausschnitte

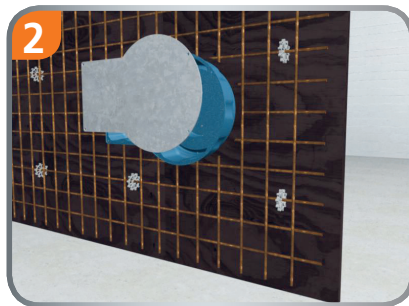


Produktfilm unter: www.primo-gmbh.com

Sonderlösungen Wandmontage



1 XXL Flexgroßdose mit Nägel auf der Schalung befestigen.



2 Deckel mit mitgelieferten Kabelbindern befestigen.



3 Installationsrohre oder Kabel einführen, dann wird der Beton gegossen.



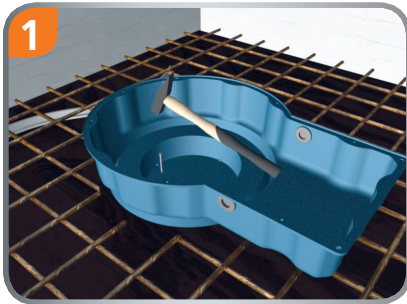
Art.-Nr.	Bezeichnung	VPE
P536	XXL Flexgroßdose	5



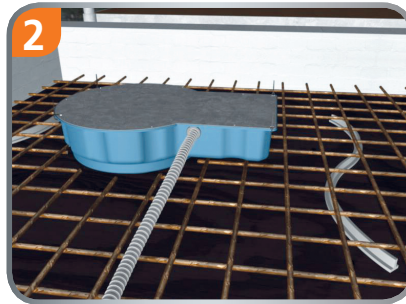
XXL Light-box Flex

Light and built-in box

Installation in cast-in-place concrete



1 Nail the XXL Light-box on the formwork.

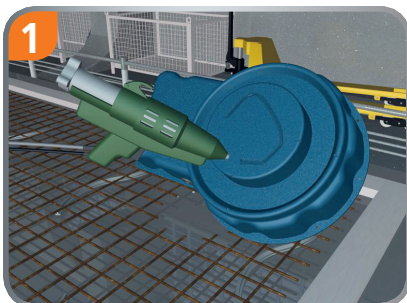


2 Fix the cover on the light-box with the included accessories and insert the concrete pipes.

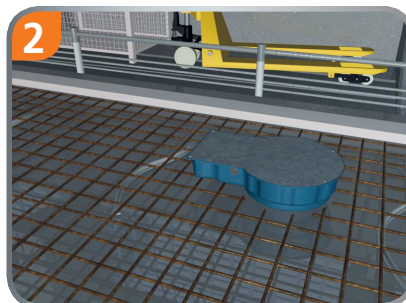


3 Insert steel strutting and pour concrete.

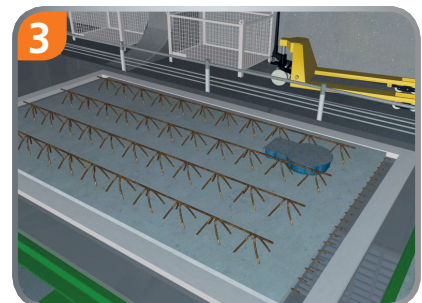
Installation at a precast factory



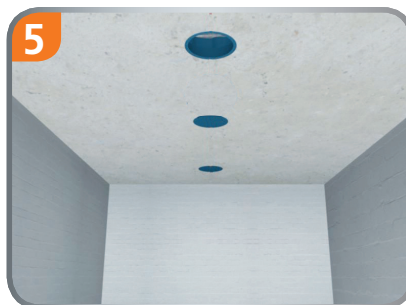
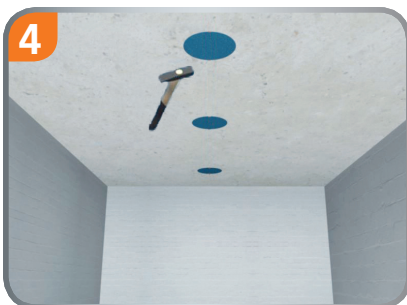
1 Paste the XXL Light-box on the formwork with a hot glue.



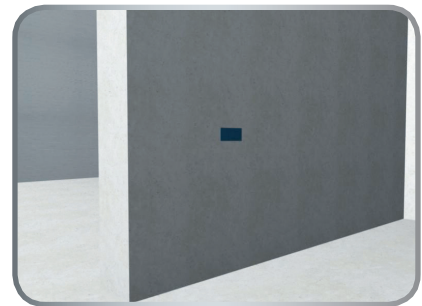
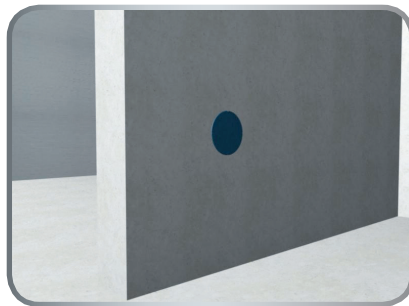
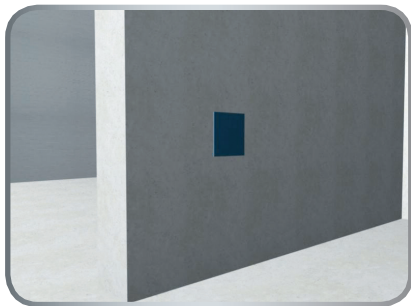
2 Insert the steel strutting.



3 Pour the concrete.



We produce your **individuell** opening



Assembly instruction


Send us the dates from your lamp and in only 5 days we produce every size for you.

- No extra costs
- Also by 1 piece
- Apposite opening

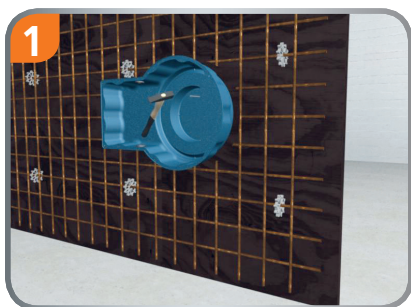
(More individual ceiling openings are available for prompt delivery. e.g. round or rectangular)

Examples

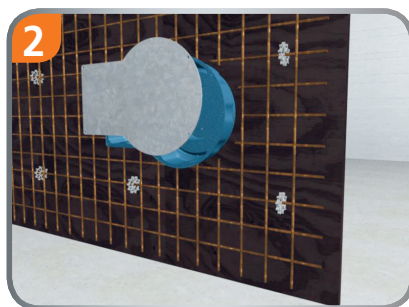


 Product clip at: www.primo-gmbh.com

Special wall installation solution



1 Nail the XXL 306 Light-box Flex on the formwork.



2 Fix the cover on the Light-box with the included accessories.



3 Insert the concrete pipes and you can pour the concrete.



Order-no.	Name	VPE
P536	XXL 306 Light-box Flex	5

