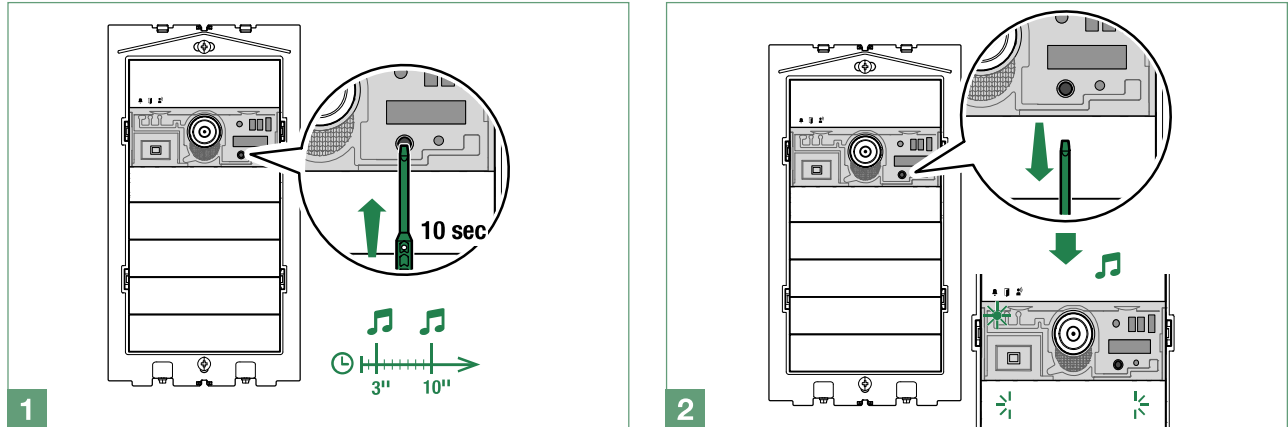


Reset to factory values

1. Press the reset button for approximately 10 sec.:
 - » after 3 seconds you will hear a beep
 - » after 10 seconds you will hear a second beep
2. Release the reset button
 - » if the procedure was completed successfully, you will hear a confirmation tone; the red LED flashes and the button backlighting comes on for the duration of the device restart procedure.
 - » if there is a device error you will hear an error tone.



Connection distances

If Art. UT8020 is powered directly from third-party standard POE switches, the maximum distance is reduced to 100 m.

