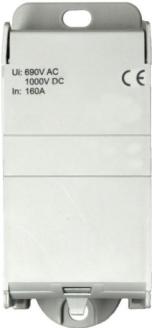
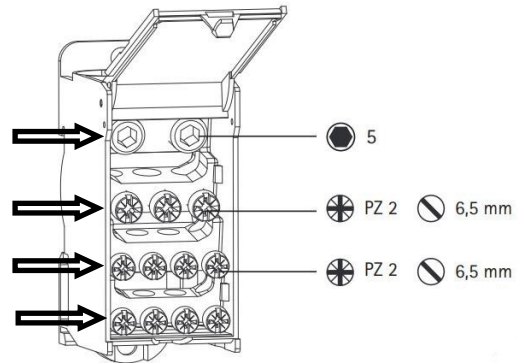


Montageanleitung: Anschlussblock, 1-polig, 160A, Zu 1x70mm², ab 8x16mm²

Mounting instruction: Terminal block, 1-pole, 160A, to 1x70mm², from 8x16mm²

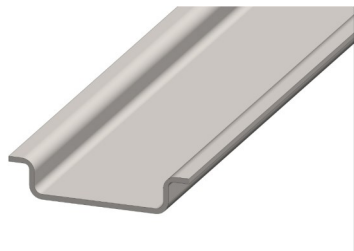
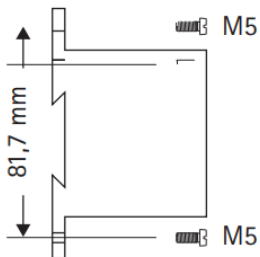


DE Aufklappen / **EN** Open



DE Drähte einführen/ Drehmoment beachten (Zugang 9Nm; Abgang 2Nm)

EN Insert wires / Observe the torque (Inlet 9Nm; Outlet 2Nm)



DE Aufbau Hutschiene / Wandmontierung (Abmessung)

EN Structure top-hat rail / Wall mounting (Dimension)

TORQUE				
9 Nm	16 - 50 mm ²	25 - 70 mm ²	2 x Ø12 mm	15 mm
2 Nm	1,5 - 16 mm ²	2,5 - 25 mm ²	3 x Ø7,5 mm	
	1,5 - 10 mm ²	1,5 - 16 mm ²	8 x Ø5,8 mm	

DE Kupferleiter (Gepresst, Mehrdrähtig, Einzeladern)

EN Copper conductor (pressed, stranded, single core)