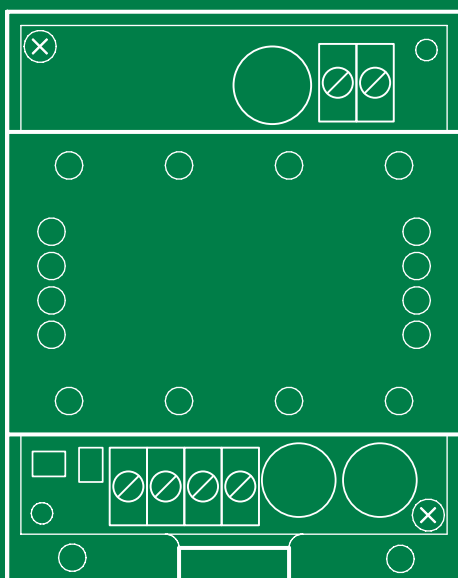


EN

TECHNICAL
MANUAL



Line amplifier module
Art. 4833C

 **Comelit**[®]
Passion. Technology. Design.

Warning

Intended use

This Comelit product was designed for use in the creation of audio and video communication systems in residential, commercial or industrial settings and in public buildings or buildings used by the public.

Installation

All activities connected to the installation of Comelit products must be carried out by qualified technical personnel, with careful observation of the indications provided in the Manuals / Instruction sheets supplied with those products.

Wires

Cut off the power supply before carrying out any maintenance procedures.

Use wires with a cross-section suited to the distances involved, observing the instructions provided in the system manual.

We advise against running the system wires through the same duct as the power cables (230V or higher).

Safe usage

To ensure Comelit products are used safely:

- carefully observe the indications provided in the Manuals / Instruction sheets
- make sure the system created using Comelit products has not been tampered with / damaged.

Maintenance

Comelit products do not require maintenance aside from routine cleaning, which should be carried out in accordance with the indications provided in the Manuals / Instruction sheets.

Any repair work must be carried out

- for the products themselves, exclusively by **Comelit Group S.p.A.**,
- for systems, by qualified technical personnel.

Disclaimer

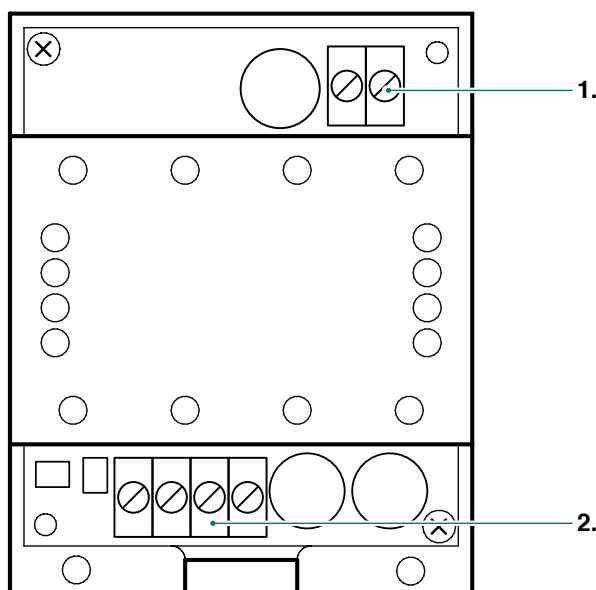
Comelit Group S.p.A. does not assume any responsibility for

- any usage other than the intended use
- non-observance of the indications and warnings contained in this Manual / Instruction sheet.

Comelit Group S.p.A. nonetheless reserves the right to change the information provided in this Manual / Instruction sheet at any time and without prior notice.

Description

Amplifier for Simplebus TOP systems, to increase the distance between the external unit and mixer 4888C. Regenerates the video component of the riser signal. Equipped with microcontroller for optimal operation management. Follow the operating instructions in the technical documentation. Power supply: 12V AC or 20V DC. Only to be mounted on the system section feeding into the mixers art. 4888C (Simplebus 1 section). Dimensions: 66x85x37 mm (4 DIN modules).



1. Terminal block **MR1**
+ - power supply terminals (12V AC or 20V DC)
2. Terminal block **MR2**
LIN LIN BUS line input
LOUT LOUT BUS line output

Technical features

MAIN FEATURES

Product height (mm)	85
Product width (mm)	66
Product depth (mm)	37
Operating temperature (°C)	-5 ÷ 40
DIN rail mounted	Yes
DIN modules (no.)	4
Maximum current absorption (mA)	100

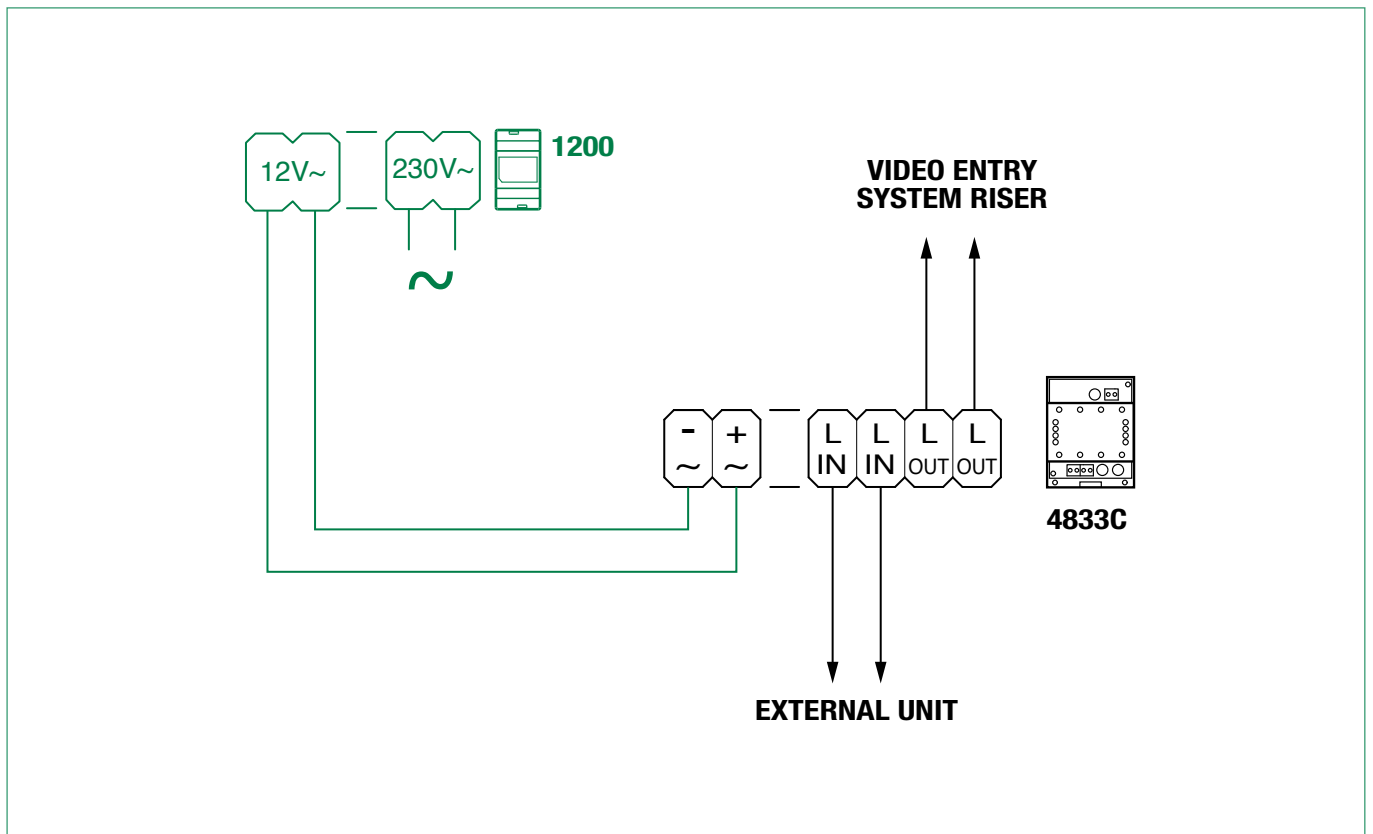
GENERAL DATA

Type of finish	Plastic
Product colour	White

COMPATIBILITY

Simplebus Top audio/video system	Yes
----------------------------------	-----

Connection



System performance and layouts

For further information of system performance and to view installation layouts, click on the system type that best meets your requirements:

- [SBTOP audio/video system](#) for the creation of audio-video systems for *residential complexes*.

CERTIFIED MANAGEMENT SYSTEMS



www.comelitgroup.com

Via Don Arrigoni, 5 - 24020 Rovetta (BG) - Italy

