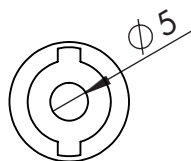
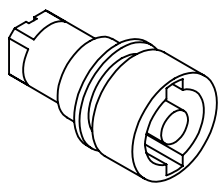
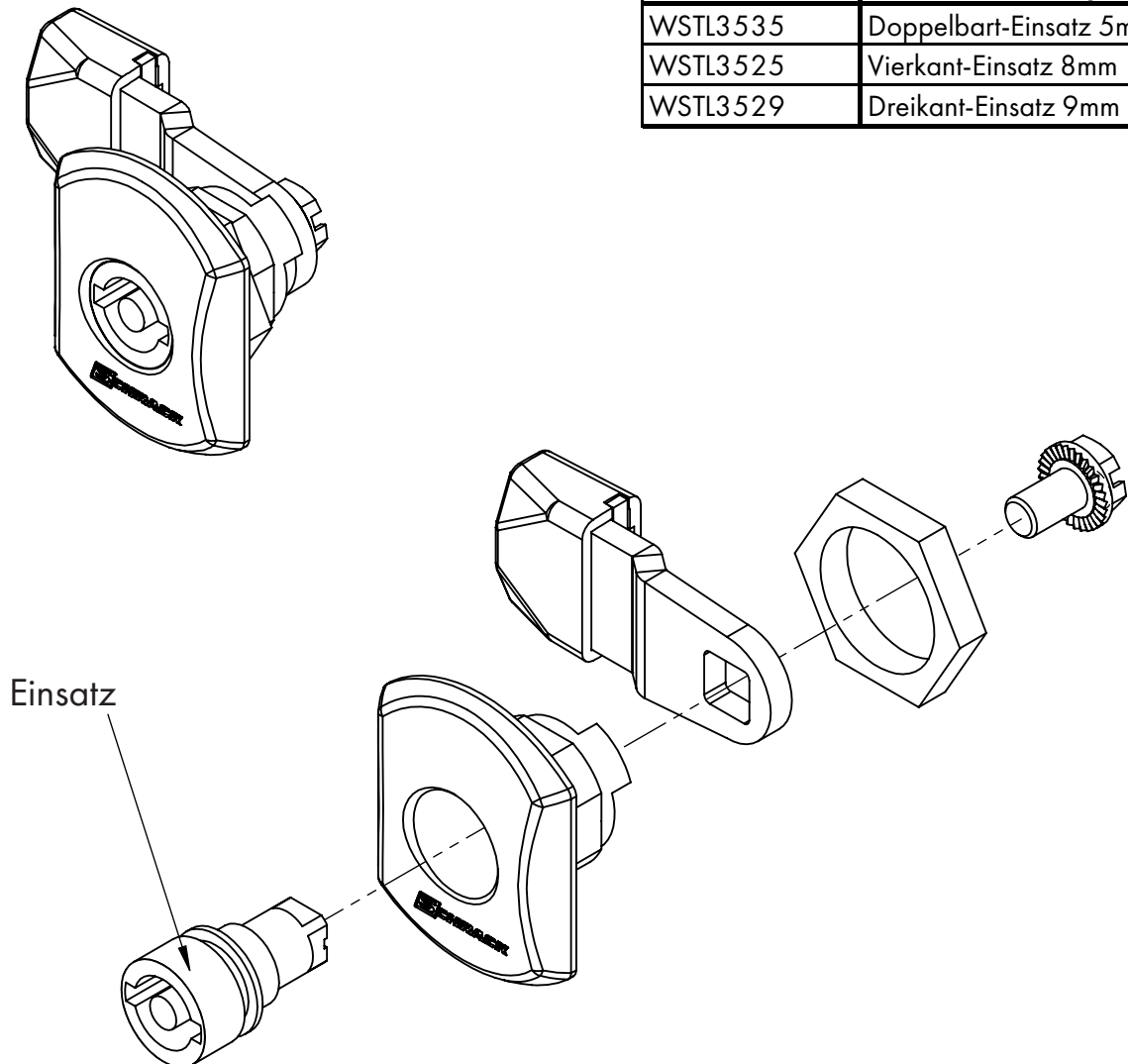
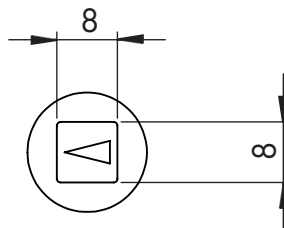
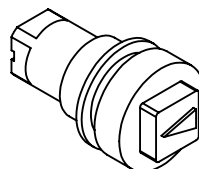


## WSA Schlosseinsätze für Vorreiber und Sperrgriff

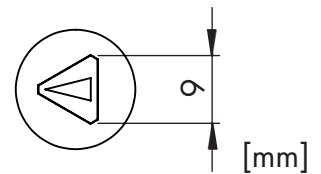
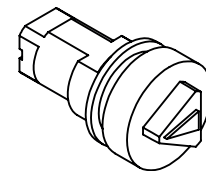
Artikelnummer	Beschreibung
WSTL3535	Doppelbart-Einsatz 5mm
WSTL3525	Vierkant-Einsatz 8mm
WSTL3529	Dreikant-Einsatz 9mm



**WSTL3535**  
5mm Doppelbart-Einsatz



**WSTL3525**  
8mm Vierkant-Einsatz



**WSTL3529**  
9mm Dreikant-Einsatz