

SIEMENS

Switch actuator UP 511S32, 1 x 16 A

Schaltaktor UP 511S32, 1 x 16 A

Actionneur de commutation UP 511S32, 1 x 16 A

Actuador de conmutación UP 511S32, 1 x 16 A

Attuatore di commutazione UP 511S32, 1 x 16 A

Atuador de comutação UP 511S32, 1 x 16 A

Devre aktüatörü UP 511S32, 1 x 16 A

Приводной элемент переключателя UP 511S32, 1 x 16 A

Schakelactor inbouw 511S32, 1 x 16 A

开关执行器 UP 511S32, 1 x 16 A



5WG1511-2SB32



Operating Instructions Betriebsanleitung
Instruções de Serviço İşletme kılavuzu

Notice d'utilisation
Руководство по эксплуатации

Instructivo
Bedieningshandleiding

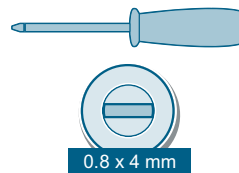
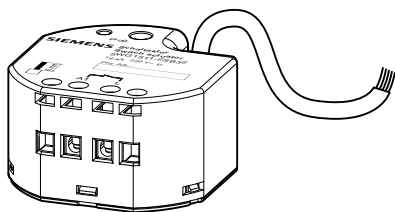
Istruzioni operative
使用说明

82404307

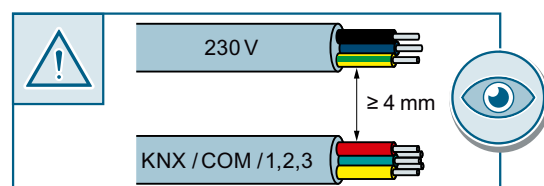
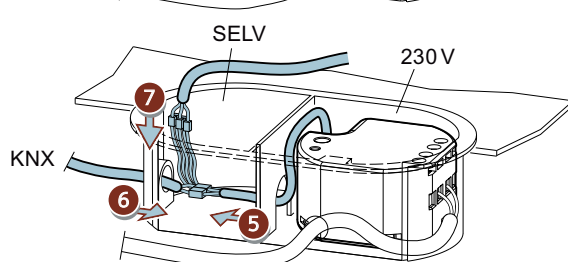
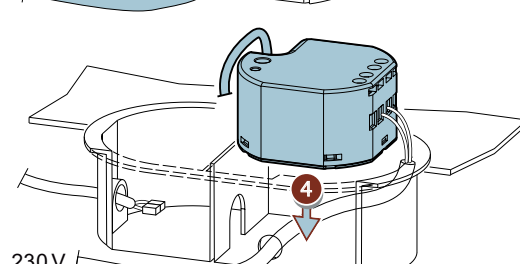
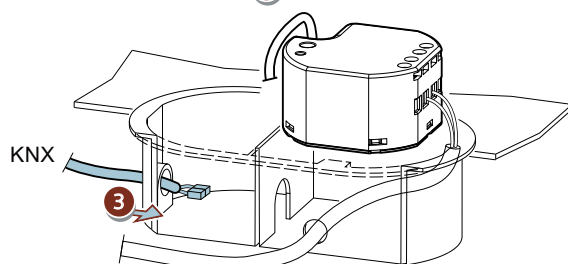
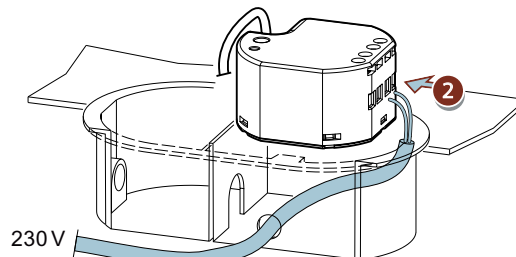
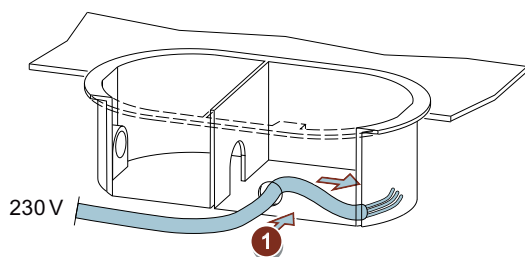


Contents / Lieferumfang / Etendue de la livraison /
Contenido / 供货范围

Required tools / Notwendige Werkzeuge /
Outils nécessaires / Herramientas requeridas / 必要工具



Assembly / Montage / Montage / Montaje / 安装





Assembly / Montage / Montage / Montaje / 安装

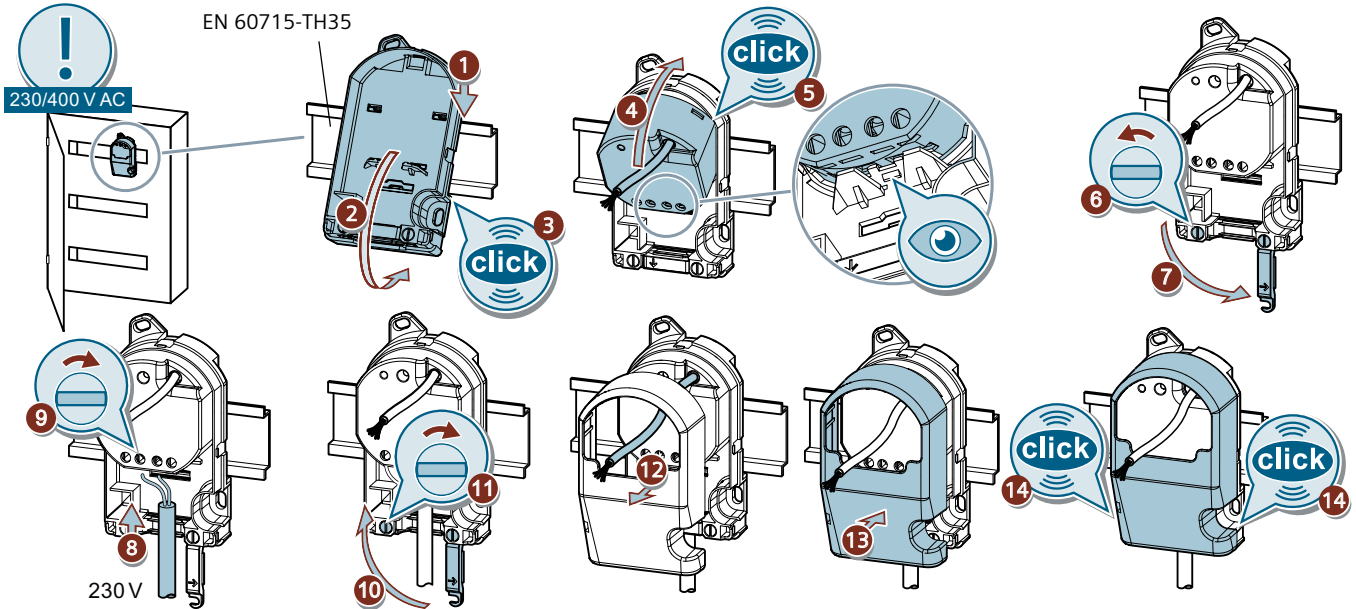


5WG1592-8AB01



Technical Documentation:

https://www.hqs.sbt.siemens.com/cps_product_data/data/search_find_en.htm?te1=5WG1&te2=592-8AB01



Removal / Demontage / Démontage / Desmontaje / 拆卸

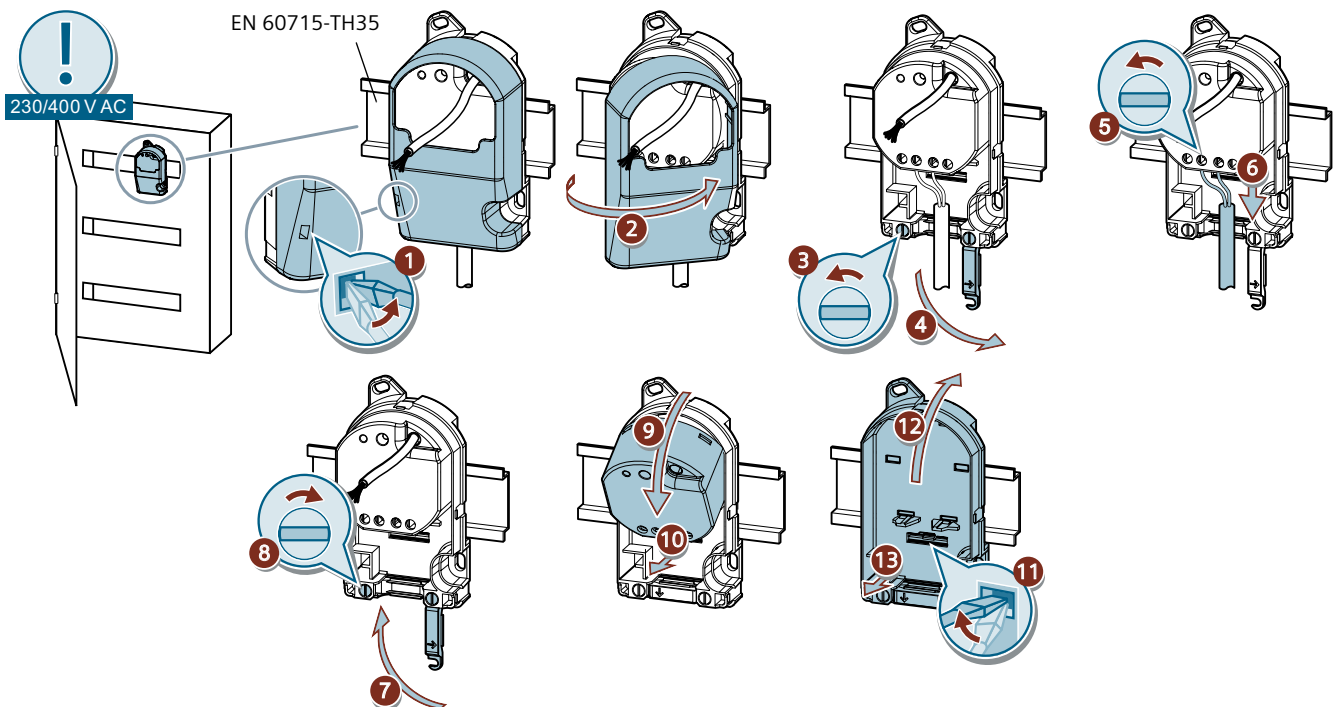


5WG1592-8AB01



Technical Documentation:

https://www.hqs.sbt.siemens.com/cps_product_data/data/search_find_en.htm?te1=5WG1&te2=592-8AB01





Assembly / Montage / Montage / Montaje / 安装

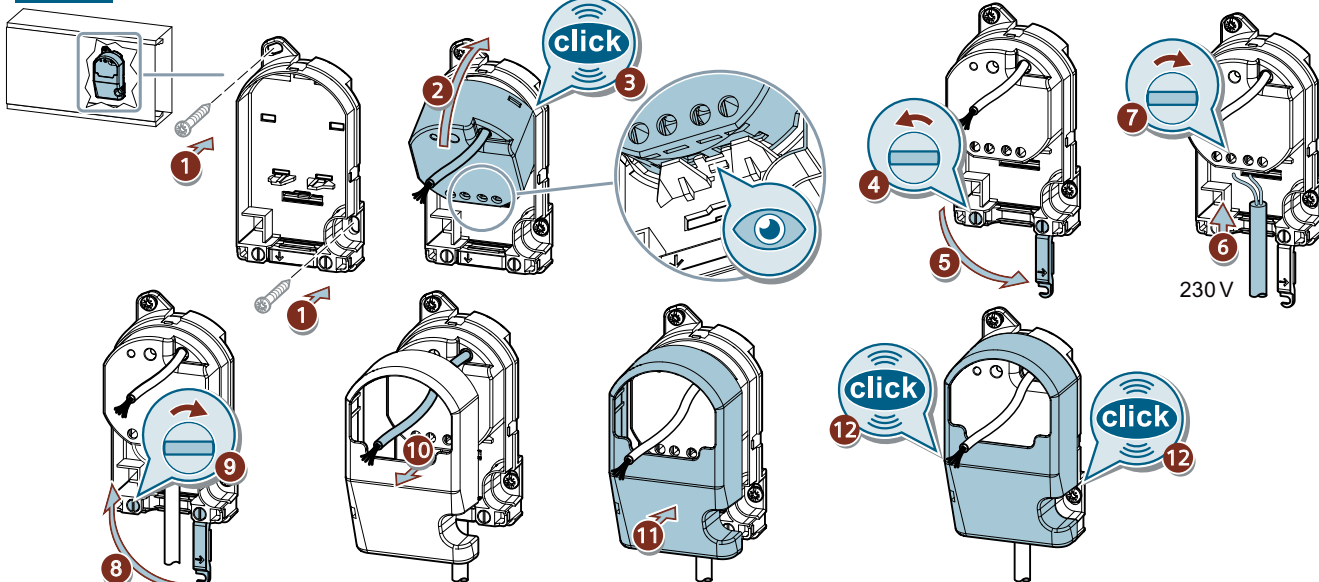


5WG1592-8AB01



Technical Documentation:

https://www.hqs.sbt.siemens.com/cps_product_data/data/search_find_en.htm?te1=5WG1&te2=592-8AB01



Removal / Demontage / Démontage / Desmontaje / 拆卸

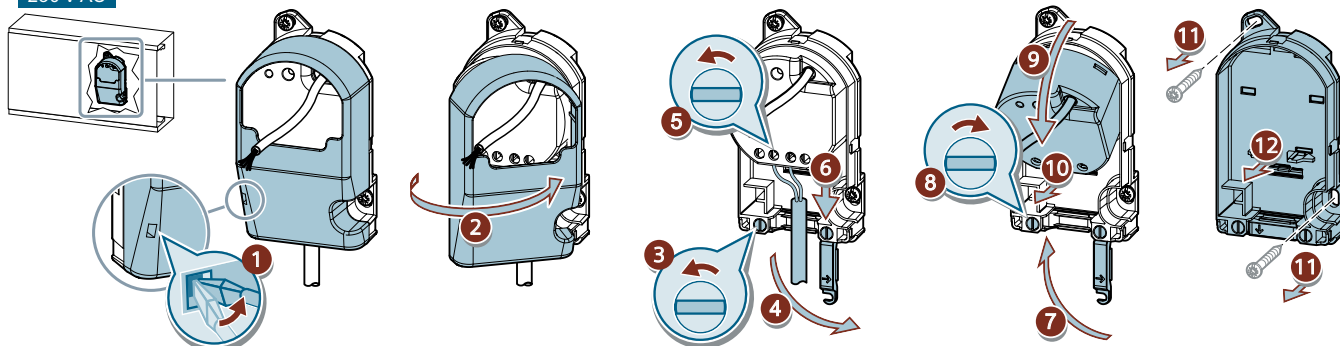


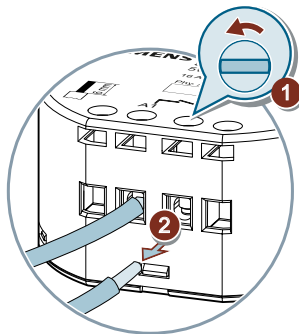
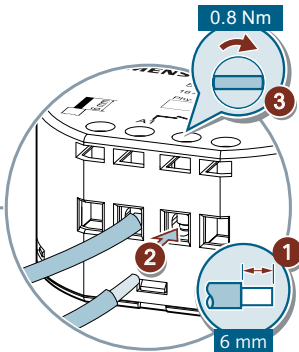
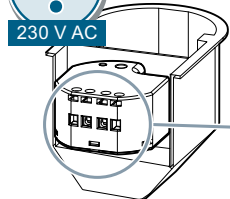
5WG1592-8AB01



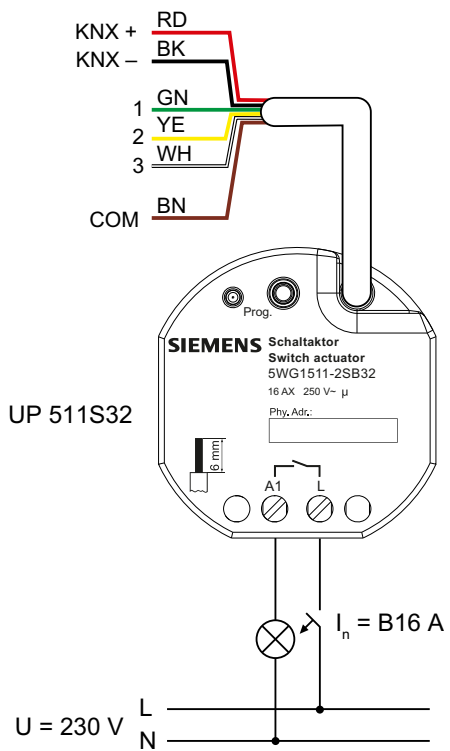
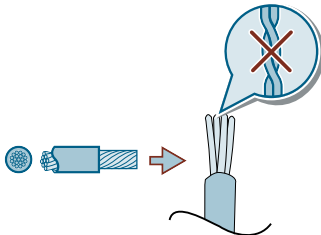
Technical Documentation:

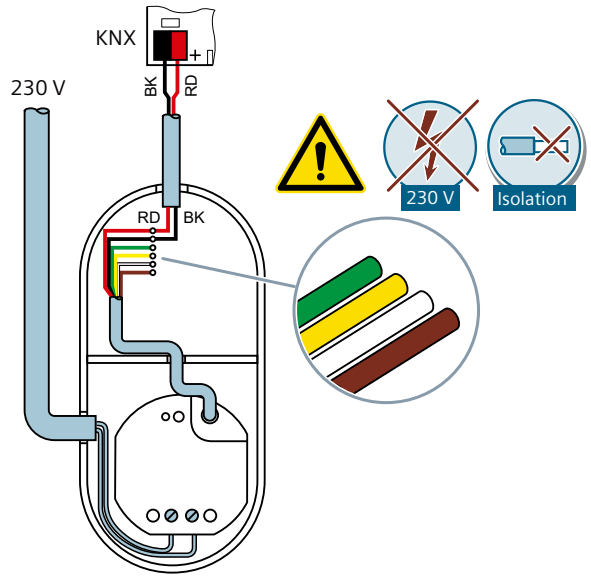
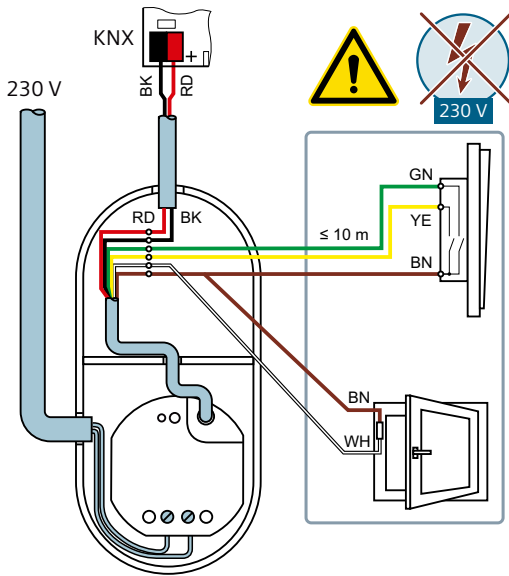
https://www.hqs.sbt.siemens.com/cps_product_data/data/search_find_en.htm?te1=5WG1&te2=592-8AB01





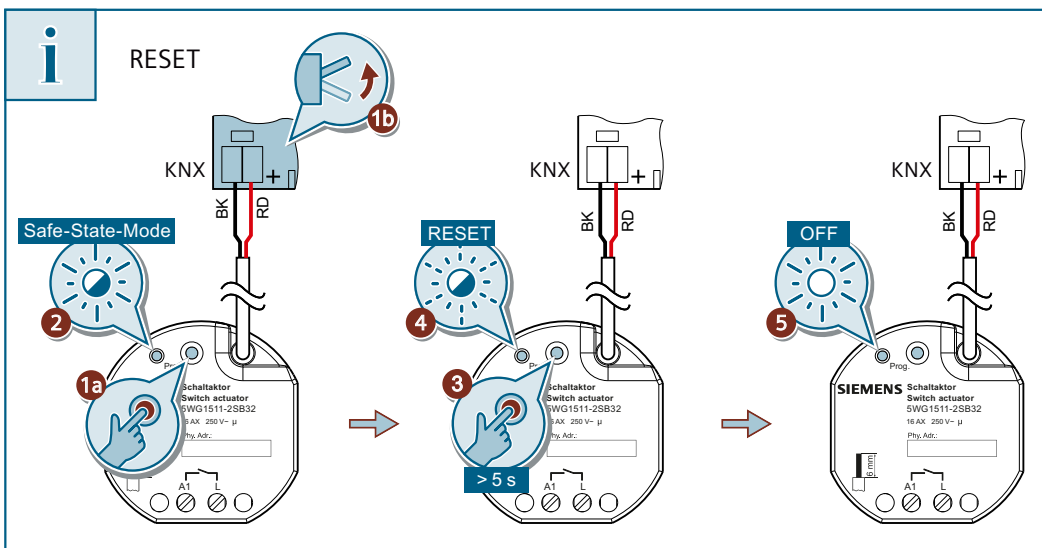
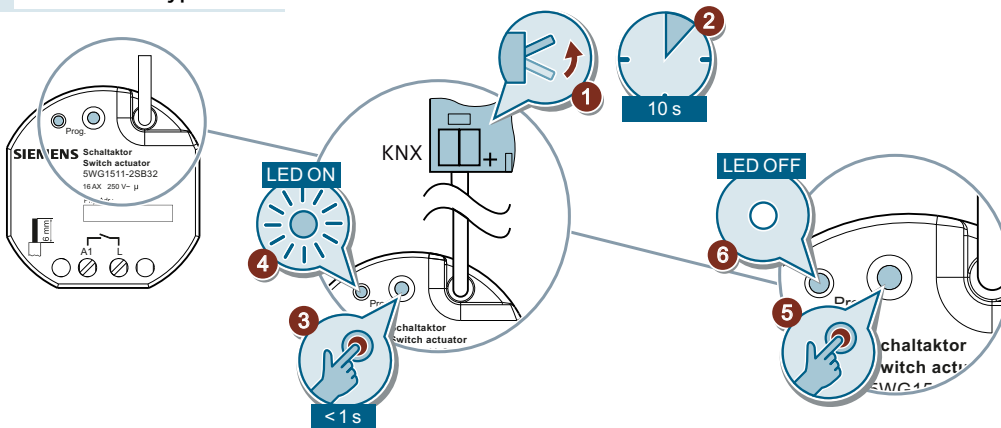
Cu	
	0.5 ... 4.0 mm ²
	0.5 ... 2.5 mm ²

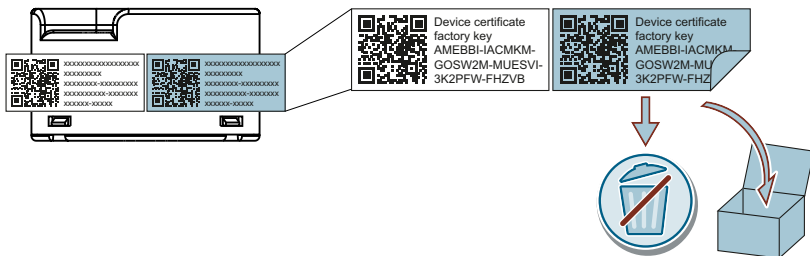
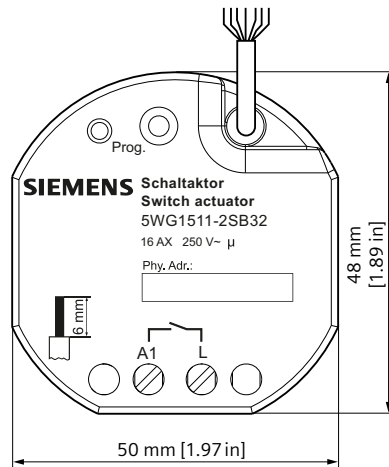
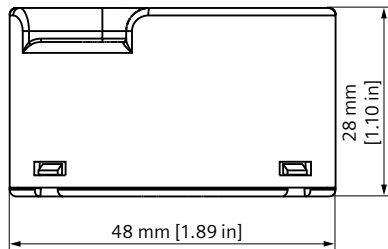
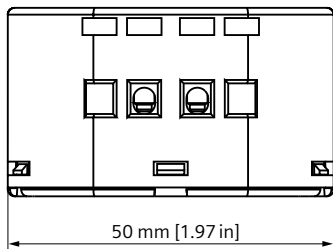




Test / Test / Test / Test / 测试

KNX 24 V DC typ. SELV





Technical Documentation:
<https://www.siemens.com/gamma-td>



Technical Support
<https://www.siemens.com/supportrequest>



FAQ:
<https://support.industry.siemens.com/cs/ww/en/ps/faq>

